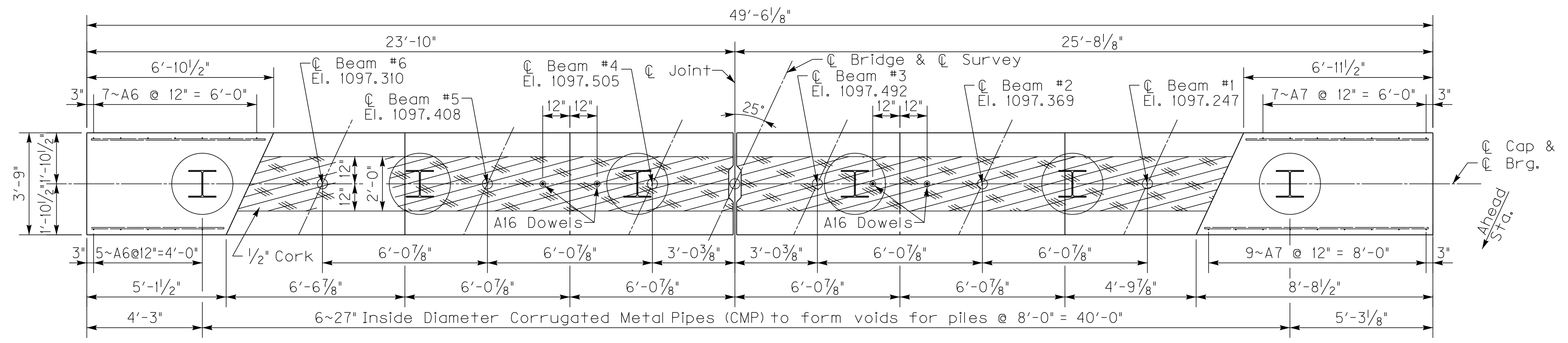
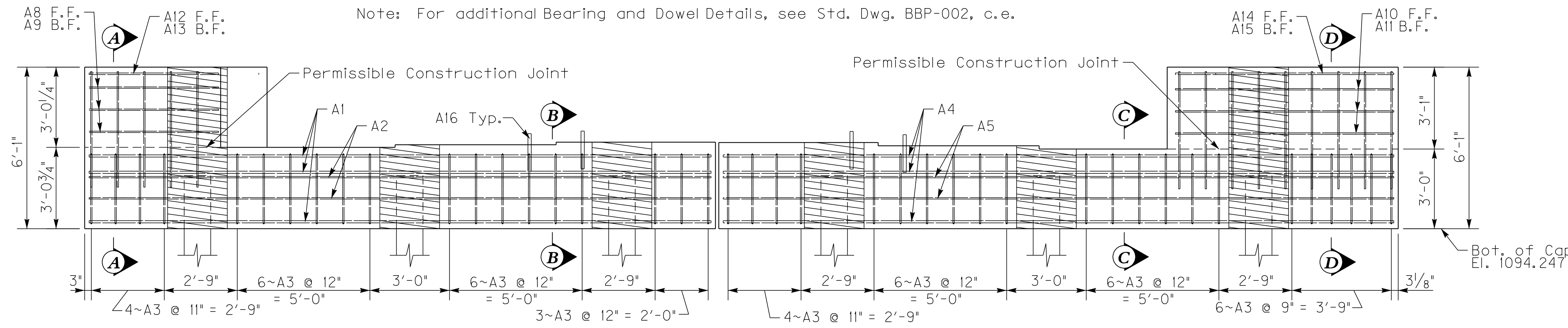


FILE NAME: J:\District\11-1075 Knox KY 6 over Lynn Camp Creek\26816 Knox KY 6 over Lynn Camp Creek\26816.dgn
 USER: JOSEPH.VANZEE
 DATE PLOTTED: 05-JUL-2013
 E-SHEET NAME: 26816-S0
 MicroStation v8.11.7.180



PLAN - Showing Cap and Dowel Reinforcement

Note: Elevations are given at the top of concrete.



ELEVATION - Showing Cap and Dowel Reinforcement

Note: For pile location See Foundation Layout.

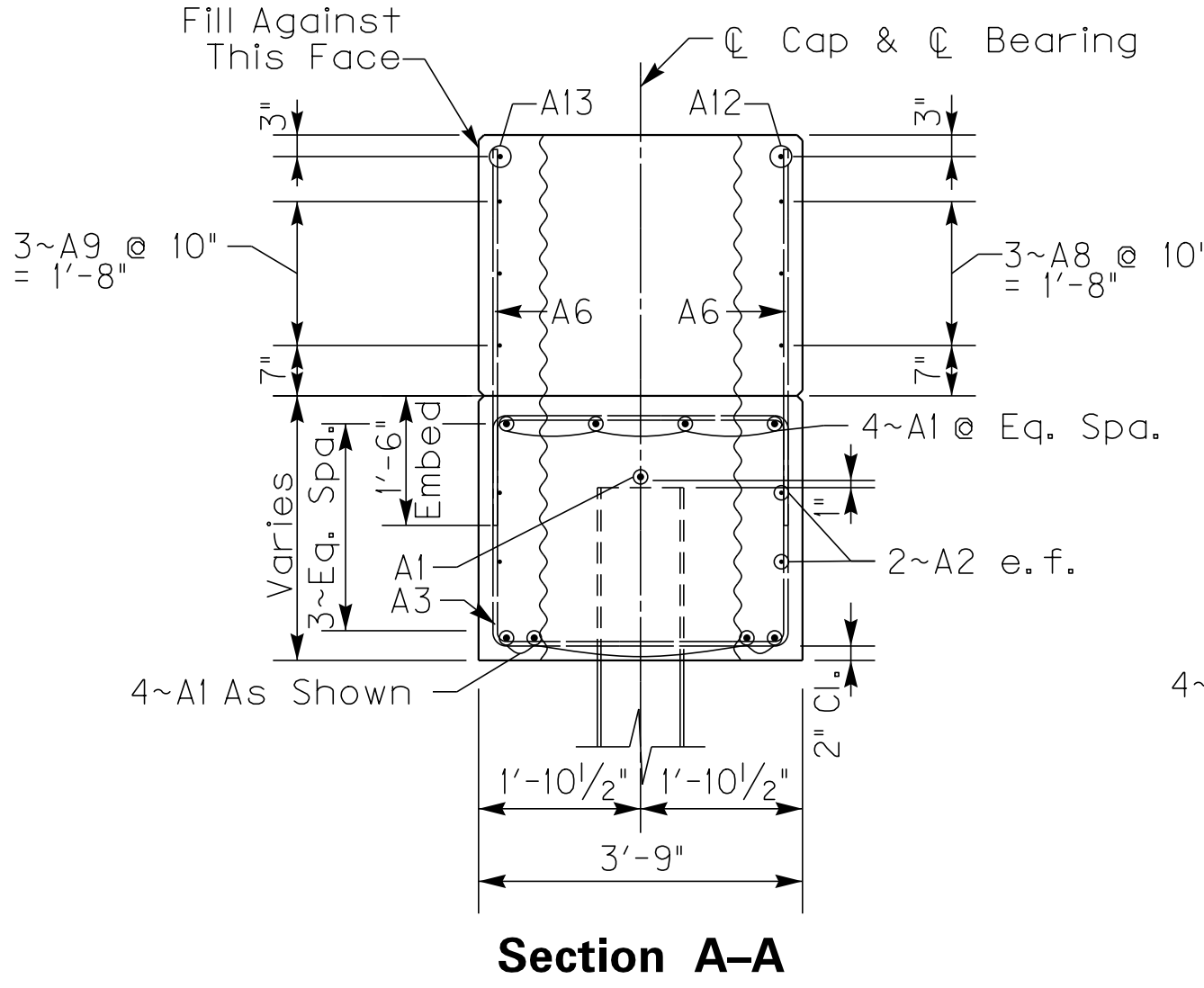
Note: CMP must be galvanized Aluminized will not be allowed.

- Construction Sequence:**
- 1) Erect precast end bents to elevation.
 - 2) Fill CMP voids and shear keys with class "M" concrete.
 - 3) Drill holes for A16 Dowels and grout with non-shrink grout in accordance with Section 601. 12" Embedment Minimum.
 - 4) After Class "M" concrete reaches 3500 psi in the CMP voids and shear keys, erect Precast Superstructure Sections and Pour Closure Pours.

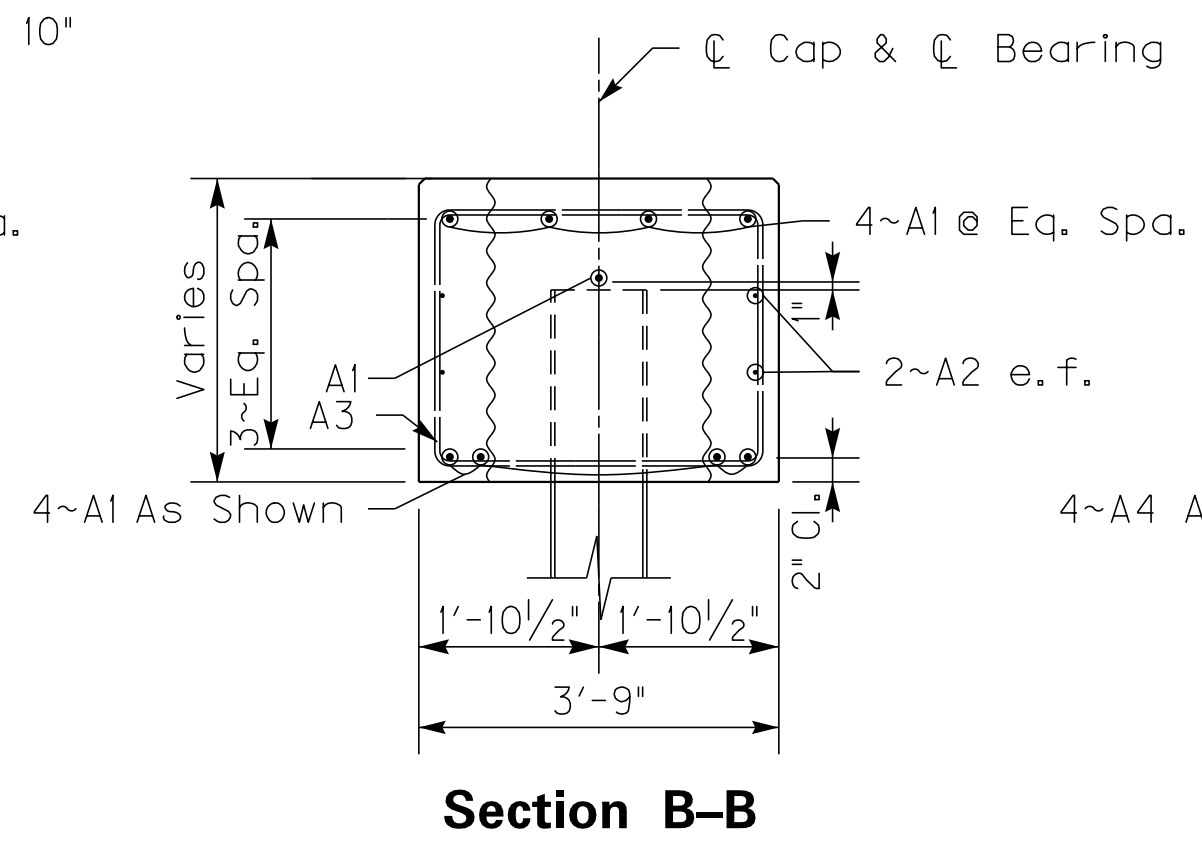
CHANGES: Submit any proposed changes to the design of the precast end bents directly to the Division of Structural Design.

Note: Include the cost of 1/2" cork in the unit price bid for Class "A" concrete.

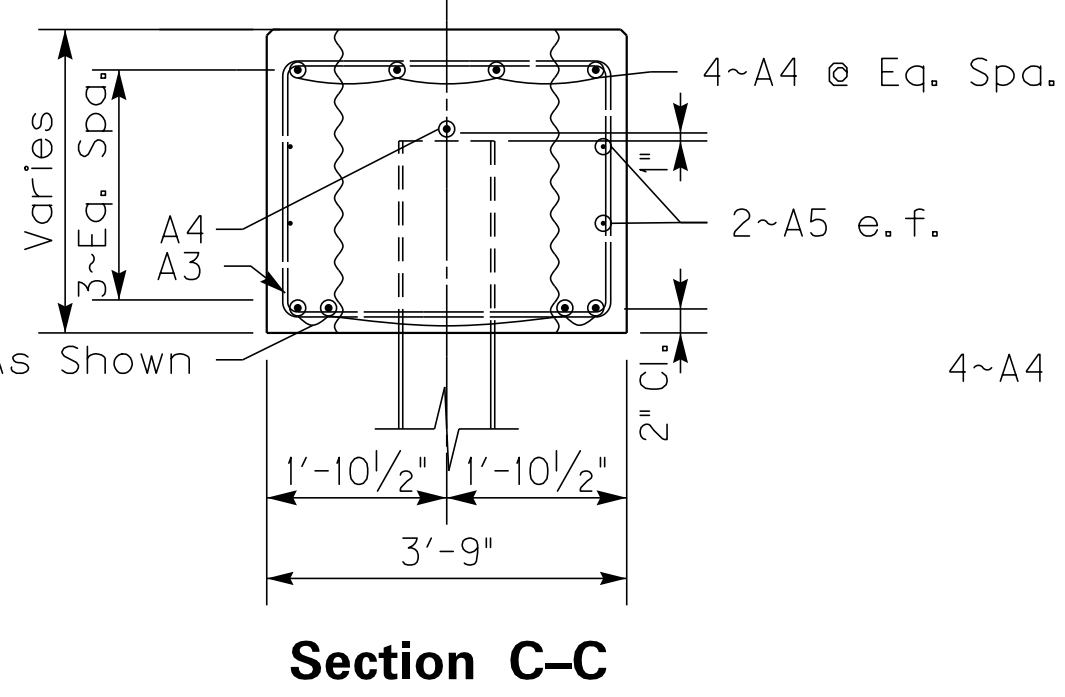
Note: Drill or torch 1/4"Ø holes in CMP to allow A1 and A4 bars to pass through as detailed.



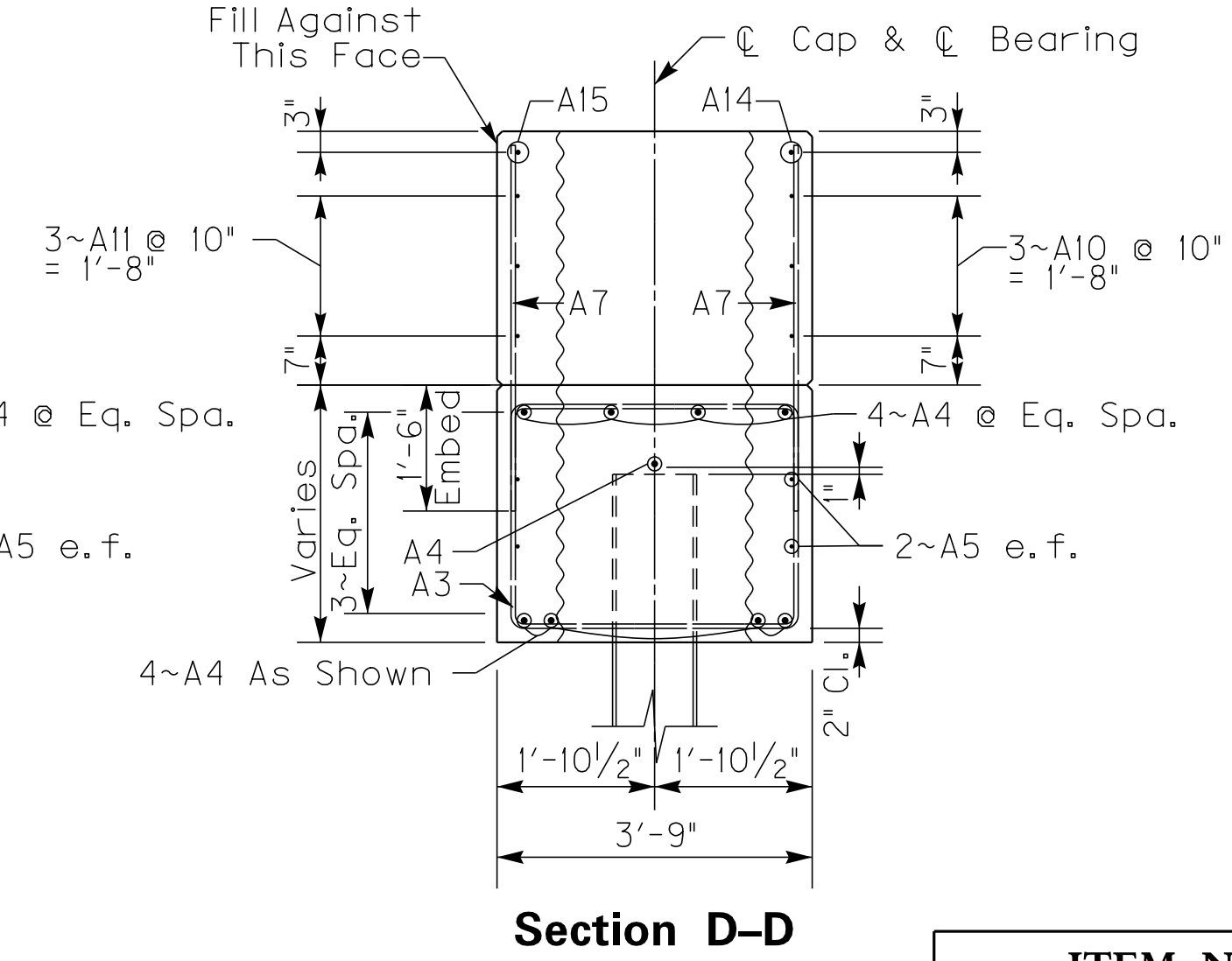
Section A-A



Section B-B



Section C-C

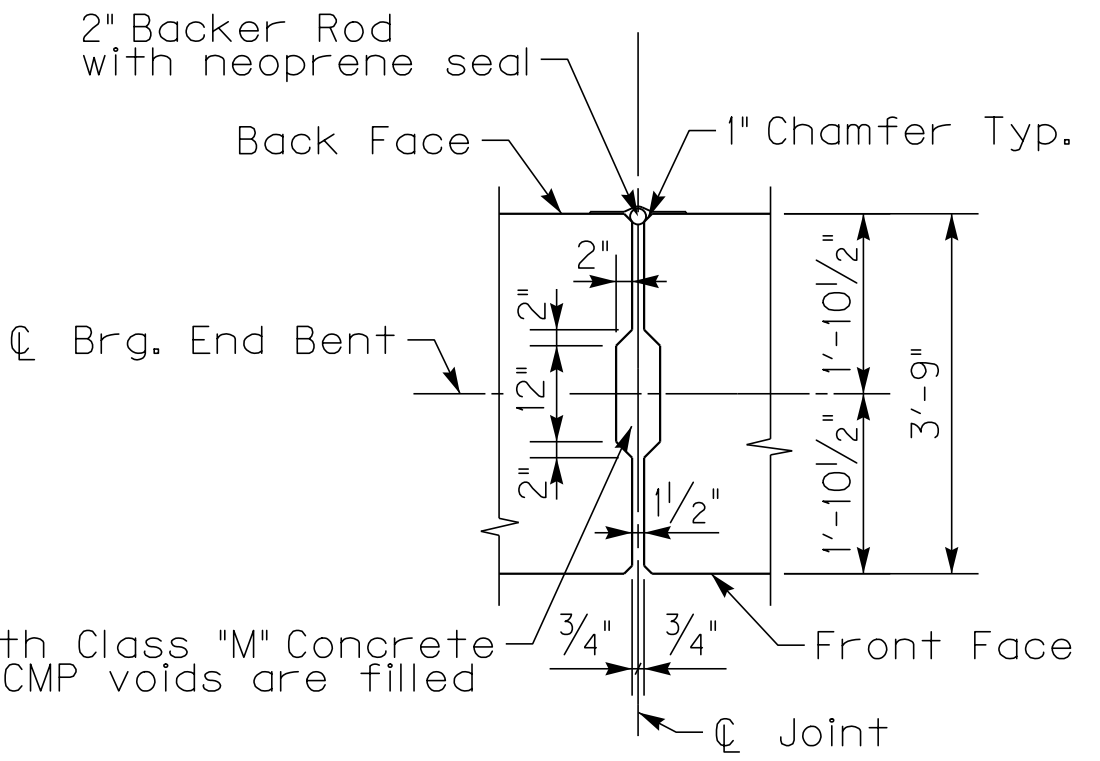
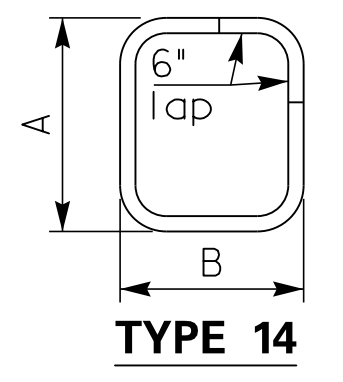


Section D-D

BILL OF REINFORCEMENT

MARK	TYPE	NO.	SIZE	LENGTH	LOCATION	A	B
A1g	Str.	9	8	23- 5	Cap		
A2g	Str.	4	5	23- 5	Cap		
A3g	14s	4	5	12- 8	Cap Stirrups	2- 8	3- 5
A4g	Str.	9	8	25- 3	Cap		
A5g	Str.	4	5	25- 3	Cap		
A6g	Str.	12	5	4- 4	Wing A Vertical		
A7g	Str.	16	5	4- 5	Wing B Vertical		
A8g	Str.	3	5	4-10	Wing A Horizontal		
A9g	Str.	3	5	6- 4	Wing A Horizontal		
A10g	Str.	3	5	8- 2	Wing B Horizontal		
A11g	Str.	3	5	6- 8	Wing B Horizontal		
A12g	Str.	1	6	4-10	Wing A Top		
A13g	Str.	1	6	6- 4	Wing A Top		
A14g	Str.	1	6	8- 2	Wing B Top		
A15g	Str.	1	6	6- 8	Wing B Top		
A16g	Str.	4	*	1- 4	Dowels		

* 1/2" Ø Smooth Round Dowels may be commercial grade steel



SHEAR KEY DETAIL @ JOINT

REVISION		DATE
DATE: June 2013		CHECKED BY
DESIGNED BY: Joseph Van Zee		Carl Van Zee
DETAILED BY: Joseph Van Zee		Carl Van Zee
Commonwealth of Kentucky		
DEPARTMENT OF HIGHWAYS		
COUNTY		
KNOX		
ROUTE	CROSSING	
KY 6	LYNN CAMP CREEK	
END BENT 1		
PREPARED BY		
Division of Structural Design		
ITEM NUMBER	SHEET NO.	
11-1075.00	S6	
		DRAWING NO.
		26816